

Science and Elementary Technology

Date: 20/June/2024

Period: 2:00 – 4:00



END OF TERM III EXAMINATIONS QUESTION PAPER

GRADE: PRIMARY FOUR (P4)

LEVEL: PRIMARY

DURATION: 2 HOURS

MARKS:

...../50

CAMIS

..... /60

INSTRUCTIONS

1. All questions are compulsory.
2. Don't open this question paper until you are told to do so`.
3. Read each question carefully before answering it.
4. Use only a **blue** or black **pen**.

1) Name any two transplanting tools used by a farmer. **(2 marks)**

.....
.....

2) Write any two playing objects made from papers. **(2 marks)**

.....
.....

3) Mention any three input devices used in computer. **(3 marks)**

.....
.....
.....

4) Complete sensibly the following sentences using the terms given below:
Information, data, mouse, arrow keys, journal. **(3 marks)**

- (i) Moving a cursor in a document from left to right, north to south we use.....
- (ii) Theis used to store data in XO Laptop.
- (iii) The processed data is called.....

5) Differentiate between worm booting from cold booting **(2 marks)**

.....
.....

6) What is the use of paint activity? **(2 marks)**

.....
.....

7) Match the following: **(4 marks)**

Column A

Column B

- | | |
|--------------------|--------------------------------------|
| (a) Communication | (i) processed data |
| (b) Information | (ii) an electronic device |
| (c) World Wide Web | (iii) collection of electronic pages |
| (d) Computer | (iv) exchanging information |

8) Choose the best answer from the following
 Window is..... **(2 marks)**

- a. A fun programming language.
- b. Major element of the sugar interface.
- c. The area occupied by the running program on the screen.

9) Match the following elements to their meaning **(3 marks)**

Types of wind	Meaning
Breeze wind	Strong and destroy environment.
Storm wind	Smoothing feeling on hot day.
Light wind	Take dust and leaves from the soil to the sky.

10) Answer by TRUE if the statement is correct and by False if the statement is wrong. **(3 marks)**

- a. Wind doesn't help in rain formation.....
- b. Wind clashes air plane.....
- c. Wind is not a moving air.....

11) Soil is a home of many animals, name any three of the animals which live in the soil? **(3 marks)**

.....
.....
.....

12) What are the reproduction modes to the animals below **(2 marks)**
a. dog.....
b. duck.....

13) What are any two criteria for choosing a rabbit to rear. **(2 marks)**
.....
.....

14) Plants play an important role of soil production and as well as fuels. give any two protecting measure for plants **(2 marks)**

.....
.....

15) State whether the following statements are True or False **(3 marks)**
a. Hypogeal germination occurs in bean seeds.....
b. Roots absorb water and minerals from the soil.....
c. Flowers are the reproductive parts of a plant.....

16) Match the sensory organs to their sensory nerves **(3 marks)**

Sensory organs

- A. Nose
- B. Eye
- C. Ear

Sensory nerves

- I. Auditory nerve
- II. Olfactory nerve.
- III. Optic nerve

17) Find out three possible ways of preventing skin diseases. **(3 marks)**

.....
.....
.....

18) Analyze the statement below and state whether they are **true** or **false. (2 marks)**

a) The tongue enables us to balance our body.....

b) Short sightedness can be corrected using concave.....

19) Explain how we could take measures to protect our skeleton. **(2 marks)**

.....
.....

20) State two examples of involuntary movement **(2 marks)**

.....
.....

End!!!

Science and Elementary Technology

Date: 20/June/2024

Period: 2:00 – 4:00



END OF TERM III EXAMINATIONS MARKING GUIDE

GRADE: PRIMARY FOUR (P4)

LEVEL: PRIMARY

DURATION: 2 HOURS

MARKS:

...../50

CAMIS

..... /60

INSTRUCTIONS

1. All questions are compulsory.
2. Don't open this question paper until you are told to do so`.
3. Read each question carefully before answering it.
4. Use only a **blue** or black **pen**.

1) Name any two transplanting tools used by a farmer. **(2 marks)**

Answer

- A trowel
- A hoe
- A machete
- Spade

2) Write any two playing objects made from papers. **(2 marks)**

Answer

- A toy car.
 - A toy boats.
- A toy airplane.

3) Mention any three input devices used in computer. **(3 marks)**

Answer

- Keyboard
- Mouse
- Touchpad

4) Complete sensibly the following sentences using the terms given below:
Information, data, mouse, arrow keys, journal. **(3 marks)**

(i) Moving a cursor in a document from left to right, north to south we use.....

(ii) Theis used to store data in XO Laptop.

(iii) The processed data is called.....

Answer

- Arrow keys
- Journal
- Information

5) Differentiate between warm booting from cold booting **(2 marks)**

Answer

Warm booting is restarting a computer which was initially on while Cold booting is restarting a computer which was off.

6) What is the use of paint activity? **(2 marks)**

Answer

It is used to draw, color and edit pictures.

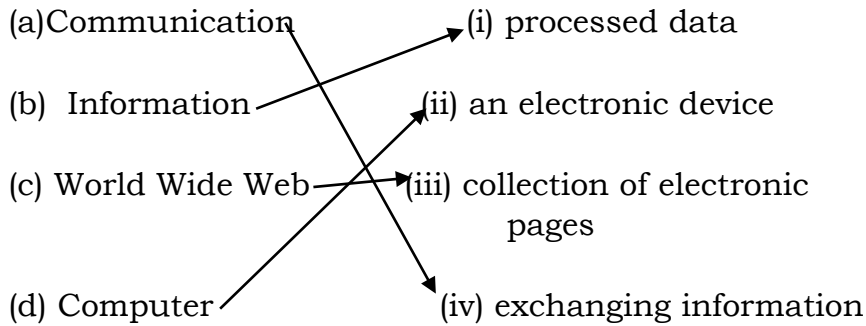
7) Match the following:

(4 marks)

Answer

Column A

Column B



8) Choose the best answer from the following

Window is..... (2 marks)

- a. A fun programming language.
- b. Major element of the sugar interface.
- c. The area occupied by the running program on the screen.

Answer

C. The area occupied by the running program on the screen.

9) Match the following elements to their meaning

(3 marks)

Answer

Types of wind	Meaning
Breeze wind	Strong and destroy environment.
Storm wind	Smoothing feeling on hot day.
Light wind	Take dust and leaves from the soil to the sky.

10) Answer by TRUE if the statement is correct and by False if the statement is wrong. (3 marks)

- a. Wind doesn't help in rain formation.....FALSE
- b. Wind clashes air plane..... TRUE
- c. Wind is not a moving air..... FALSE

11) Soil is a home of many animals, name any three of the animals which live in the soil? **(3 marks)**

Answer

- Earth worms
- Ants
- Moles

12) What are the reproduction modes to the animals below **(2 marks)**

- a. dog.....
- b. duck.....

Answer

- Viviparous
- Oviparous

13) What are any two criteria for choosing a rabbit to rear. **(2 marks)**

Answer

You should consider the following criteria

- breeds
- colour and coat
- Age
- Health
- Environment

14) Plants play an important role of soil production and as well as fuels. give any two protecting measure for plants **(2 marks)**

Answer

- protecting plants from overgrazing
- reducing charcoal burning
- avoiding deforestation
- planting more plants.

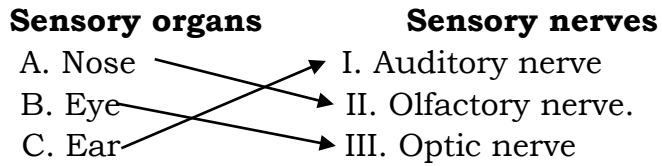
15) State whether the following statements are True or False **(3 marks)**

- a. Hypogeal germination occurs in bean seeds..... False

b. Roots absorb water and minerals from the soil..... True

c. Flowers are the reproductive parts of a plant..... True

16) Match the sensory organs to their sensory nerves **(3 marks)**



17) Find out three possible ways of preventing skin diseases. **(3 marks)**

Answer

- Bathing regularly.
- Wearing clean and dry clothes.
- Avoid using carelessly sharp cutting tools.
- Good nutrition.
- Ironing clothes.

18) Analyze the statement below and state whether they are **true** or **false**.
(2 marks)

a) The tongue enables us to balance our body..... False

b) Short sightedness can be corrected using concave..... True

19) Explain how we could take measures to protect our skeleton. **(2 marks)**

Answer

- Eating a balanced diet.
- Regular physical exercises.
- Avoid risky games.
- Keeping good body posture.

20) State two examples of involuntary movement **(2 marks)**

Answer

- Muscle of stomach
- Muscle of reproductive system
- Muscle of urinary system

End!!!